



MINDCURE

A Full Cycle of Mental Wellness
From Research to Remedy

CORPORATE PRESENTATION Q1 2022

CSE: MCUR | OTCQX: MCURF | FRA: 6MH

Disclaimer & Forward Looking Statements

This presentation (the “Presentation”) by MINDCURE Health Inc. (“MINDCURE”) is dated as of March 2, 2022. It is information in a summary form and does not purport to be complete. It is not intended to be relied upon as advice to investors or potential investors and does not take into account the investment objectives, financial situation or needs of any particular investor.

This Presentation does not constitute or form part of any offer for sale or solicitation of any offer to buy or subscribe for securities. This Presentation is not and under no circumstances is to be construed as a prospectus, offering memorandum, advertisement or public offering of any securities referred to herein, nor shall it or any part of it form the basis of or be relied on in connection with, or act as any inducement to enter into, any contract or commitment whatsoever. Recipients of this Presentation who are considering acquiring securities of MINDCURE are referred to the entire body of publicly disclosed information regarding MINDCURE. The information is subject to material updating, revision and further amendment, and is qualified entirely by reference to MINDCURE’s publicly disclosed information. This Presentation includes market and industry data and forecasts that have been obtained from third party sources, including industry publications. MINDCURE believes that the industry data and forecasts are generally reliable and that the estimates and assumptions are reasonable, but there is no assurance as to the accuracy or completeness of this data. Third party sources generally state that the information contained therein has been obtained from sources believed to be reliable, but there is no assurance as to the accuracy or completeness of included information. Although the data is believed to be reliable, MINDCURE has not independently verified any of the data from third party sources referred to in this Presentation or ascertained the underlying economic assumptions relied upon by such sources. References in this Presentation to research reports or to articles and publications should be not construed as depicting the complete findings of the entire referenced report or article. No representation or warranty, express or implied, is made or given by or on behalf of MINDCURE or any of its affiliates, directors, officers or employees as to the accuracy, completeness or fairness of the information or opinions contained in this Presentation and no responsibility or liability is accepted by any person for such information or opinions. MINDCURE does not undertake or agree to update this Presentation or to correct any inaccuracies in, or omissions from, this Presentation that may become apparent. No person has been authorized to give any information or make any representations other than those contained in this Presentation and, if given and/or made, such information or representations may not be relied upon as having been so authorized. The contents of this Presentation are not to be construed as legal, financial or tax advice.

This Presentation contains “forward-looking statements” and “forward-looking information” within the meaning of applicable securities laws (collectively, “forward-looking information”) with respect to MINDCURE. Statements in this Presentation that are forward-looking information are based on currently available competitive, financial, and economic data and operating and other plans as of the date of this Presentation but subject to various risks and uncertainties concerning the specific factors disclosed herein. Often, but not always, forward-looking information can be identified by the use of words such as “plans”, “expects”, “is expected”, “budget”, “scheduled”, “estimates”, “forecasts”, “intends”, “anticipates”, “will”, “projects”, or “believes” or variations (including negative variations) of such words and phrases, or statements that certain actions, events, results or conditions “may”, “could”, “would”, “might”, or “will” be taken, occur or delivered. In this Presentation, forward-looking information includes, but is not limited to: statements pertaining to the research, development and commercialization of technology, intellectual property or related products, or the timing thereof; the likelihood of success of any

clinical trials; the likelihood of obtaining regulatory approval; the likelihood of obtaining patents or the efficacy of such patents once granted; the leadership team; the potential for the markets that MINDCURE is anticipating to access; and the factors described under the caption “Risk Factors” in MINDCURE’s annual information form dated August 31, 2021 and documents incorporated by reference therein, and other documents publicly filed by MINDCURE, which are available on MINDCURE’s profile at www.sedar.com

Forward-looking information is not a guarantee of future performance and is based upon a number of expectations, estimates and assumptions of management at the date the statements are made, including among other things, assumptions about: the COVID-19 pandemic impact on the Canadian economy and MINDCURE’s business, and the extent and duration of such impact; MINDCURE’s ability to raise capital to complete its plans and fund its studies and to raise additional capital as MINDCURE continues to develop its products; the medical and commercial viability of the contemplated products being developed; the continued availability of key leadership personnel; and, laws and regulations that affect MINDCURE’S business. While MINDCURE considers these assumptions to be reasonable, the assumptions are inherently subject to significant business, social, economic, political, regulatory, competitive and other risks and uncertainties, contingencies and other factors that could cause actual performance, achievements, actions, events, results or conditions to be materially different from those projected in the forward-looking information. Many assumptions are based on factors and events that are not within the control of MINDCURE and there is no assurance they will prove to be correct.

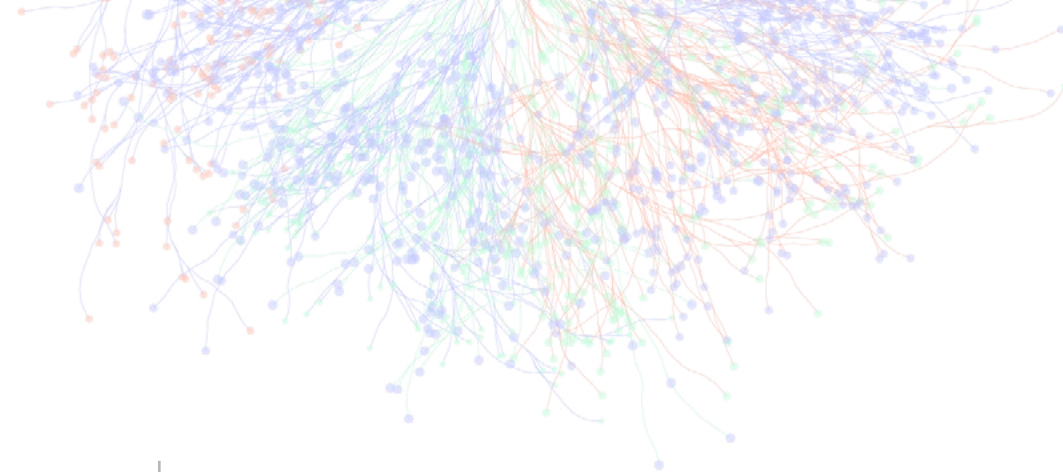
Although MINDCURE has attempted to identify important factors that could cause actual results, performance or achievements to differ materially from those contained in the forward-looking information, there can be other factors that cause results, performance or achievements not to be as anticipated, estimated or intended. To the extent any forward-looking information contains forecasts or financial outlooks, such information is being provided solely to enable a reader to assess MINDCURE’s financial condition and its operational history and experience in the industry. Readers are cautioned that this information may not be appropriate for any other purpose, including investment decisions. Such information, as with forward-looking information generally, is, without limitation, based on the assumptions and subject to the risks and other cautionary statements set out above. The actual results achieved will vary from the forecast or financial outlook results and the variations may be material. No representation or warranty of any kind is or can be made with respect to the accuracy or completeness of, and no representation or warranty should be inferred from, our projections or the assumptions underlying them. There can be no assurance that such information will prove to be accurate or that management’s expectations or estimates of future developments, circumstances or results will materialize. As a result of these risks and uncertainties, the results or events predicted in this forward-looking information may differ materially from actual results or events. Because of the risks, uncertainties and assumptions contained herein, readers should not read forward-looking information as guarantees of future performance or results. Nothing in this presentation is, or should be relied upon as, a promise or representation as to the future. All forward-looking information provided in this Presentation is qualified in its entirety by this cautionary statement, and MINDCURE disclaims any obligation to revise or update any such forward-looking information or to publicly announce the result of any revisions to any of the forward-looking information contained herein to reflect future results, events or developments, except as required by law. Accordingly, readers should not place undue reliance on forward-looking information.



MINDCURE

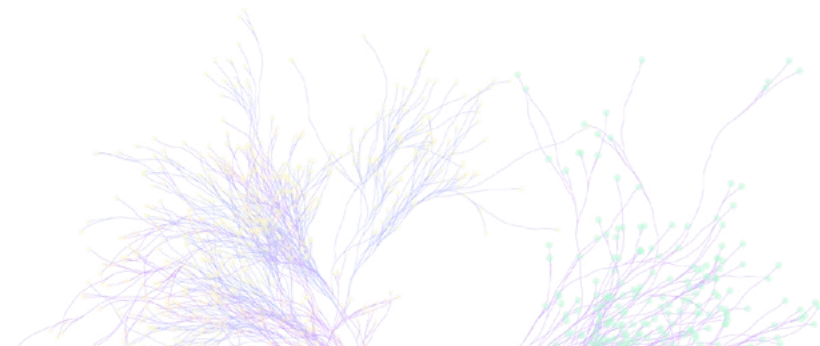
We are a life sciences company focused on developing **digital therapeutics technology** & **researching psychedelic compounds** to rapidly scale science-based and evidence-backed breakthroughs that invite us all into our richest lives.

We build **Mental Wealth™**



MINDCURE
Research

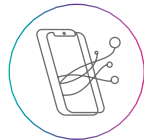
MINDCURE
Technology



Investment Highlights



Intellectual property (IP) protection with provisional patent applications submitted for technological and research advances.



Poised to generate near-term revenue based on full commercial deployment in early 2022 of proprietary **digital therapeutics platform (DTx)**.



Advancing innovative drug development by producing and manufacturing **synthetic ibogaine**.



Launched “The Desire Project”, a clinical research study to treat untapped market of female Hypoactive Sexual Desire Disorder with **MDMA-assisted psychotherapy**.



Strong financial position with **\$13.4M** in cash as of November 30, 2021.



Significant market opportunity targeting mental health conditions that affect a global population of 1 billion, with an estimated productivity loss of **\$1 trillion**.



Purpose-built strategic partnerships to advance proprietary IP for DTx through clinic agreements.

Leadership Team

MINDCURE is proudly led by a team of industry experts in biotech, life sciences, new product discovery, and technology.



Kelsey Ramsden – Co-Founder, President & CEO

15 years of experience founding, scaling, and operating innovative companies across Canada and the Caribbean. Built multiple 8-figure businesses and twice been named Canada's Top Female Entrepreneur. On the Entrepreneurship Council for the University of Western Ontario, where she is also a faculty member. MBA from the Richard Ivey School of Business at the University of Western Ontario.



Dr. Doron Sagman – Chief Medical Officer

18 years of executive level experience in the pharmaceutical industry as Sr. Medical Director/Vice-President R&D and Medical Affairs at Eli Lilly Canada, leading the medical affairs, clinical and regulatory affairs divisions across a broad therapeutic span, including neuroscience immunology, oncology, and diabetes. Psychiatrist with 30 years of inpatient and outpatient clinical and research investigator experience focused on mood and anxiety disorders in both academic and community settings. Graduate of McGill University with MD from the University of Calgary and psychiatric residency (FRCPC) at the University of Toronto.



Dr. Clare Purvis – Chief Product Officer

11 years of experience, most recently as Headspace Health's VP of Clinical Product and Content where she oversaw clinical and scientific strategy and led new product development in mental and behavioral health. Prior to joining Headspace, Dr. Purvis led clinical product innovation at Lantern, a venture-backed digital mental health startup based in San Francisco, CA. Dr. Purvis is a licensed clinical psychologist in the State of California and received her Doctor of Psychology degree from the PGSP-Stanford Consortium. She completed a postdoctoral fellowship in value-based healthcare innovation at Stanford University School of Medicine's Clinical Excellence Research Center (CERC), where she now serves as an Affiliate Scholar focused on the use of technology to make great healthcare more affordable.



Tarik Lebbadi – Chief Operating Officer

13 years of international operational experience. Led the medical division of Johnson & Johnson in Morocco. Holds a BA in Mathematics and Computer Science from Ripon College and an MBA from IESE Business School in Barcelona, Spain.



Daniel Herrera – Chief Growth Officer

Pharmaceutical executive with extensive experience in highly regulated industries. Experienced with medical affairs, product development and product licensing, negotiations with public and private payers, GPOs, and pharmacy buyers, and strategic partnerships resulting in high-value M&A transactions. Graduate of McGill University and the University of Montreal. MBA from the John Molson School of Business at Concordia University.

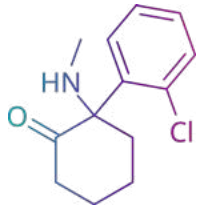
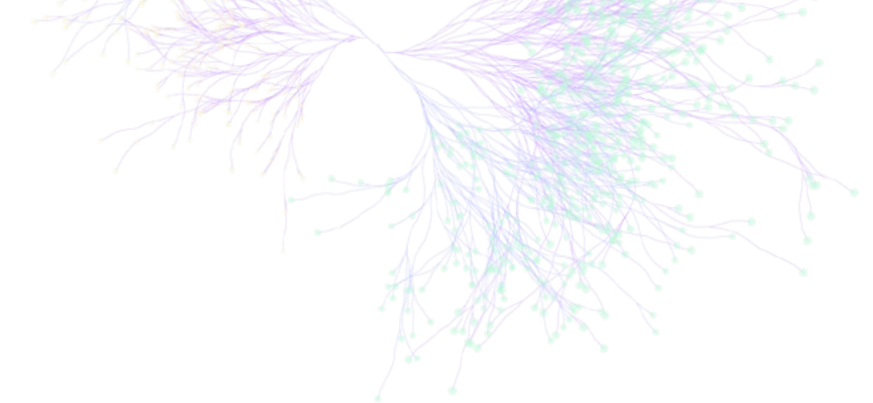


Michael Wolfe – Chief Financial Officer

30 years' experience in finance, accounting, private equity, and business valuation. CFO of Baylin Technologies Inc. CFO of several mid-market Canadian companies, including Masstech Group Inc. General Partner at VenGrowth Capital Partners Inc. Has CPA, CA designation, a Chartered Business Valuator designation, an MBA from McMaster University, and a BA (Business and Economics) from the University of Western Ontario.

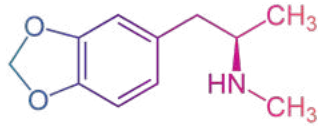
Mental Wellness: Psychedelic Therapies

Psychedelics show promise in treating a variety of mental health conditions.



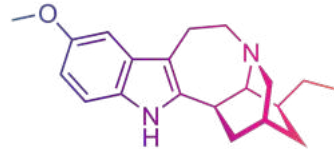
KETAMINE

A double-blind placebo-controlled study confirmed significant therapeutic improvements as early as **80 minutes** after a single dose of ketamine.¹



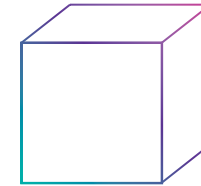
MDMA

In MAPS' completed Phase 3 trial, **67%** of participants no longer had PTSD after three treatment sessions.²



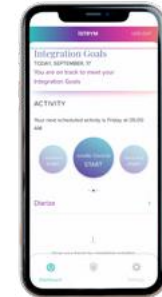
IBOGAINE

A single ibogaine treatment reduced opioid withdrawal symptoms and achieved opioid cessation or sustained reduced use in dependent individuals as measured over **12 months**.³



NOVEL MOLECULE

Advancing novel molecule research to target indication-specific needs and commercialization optimization.



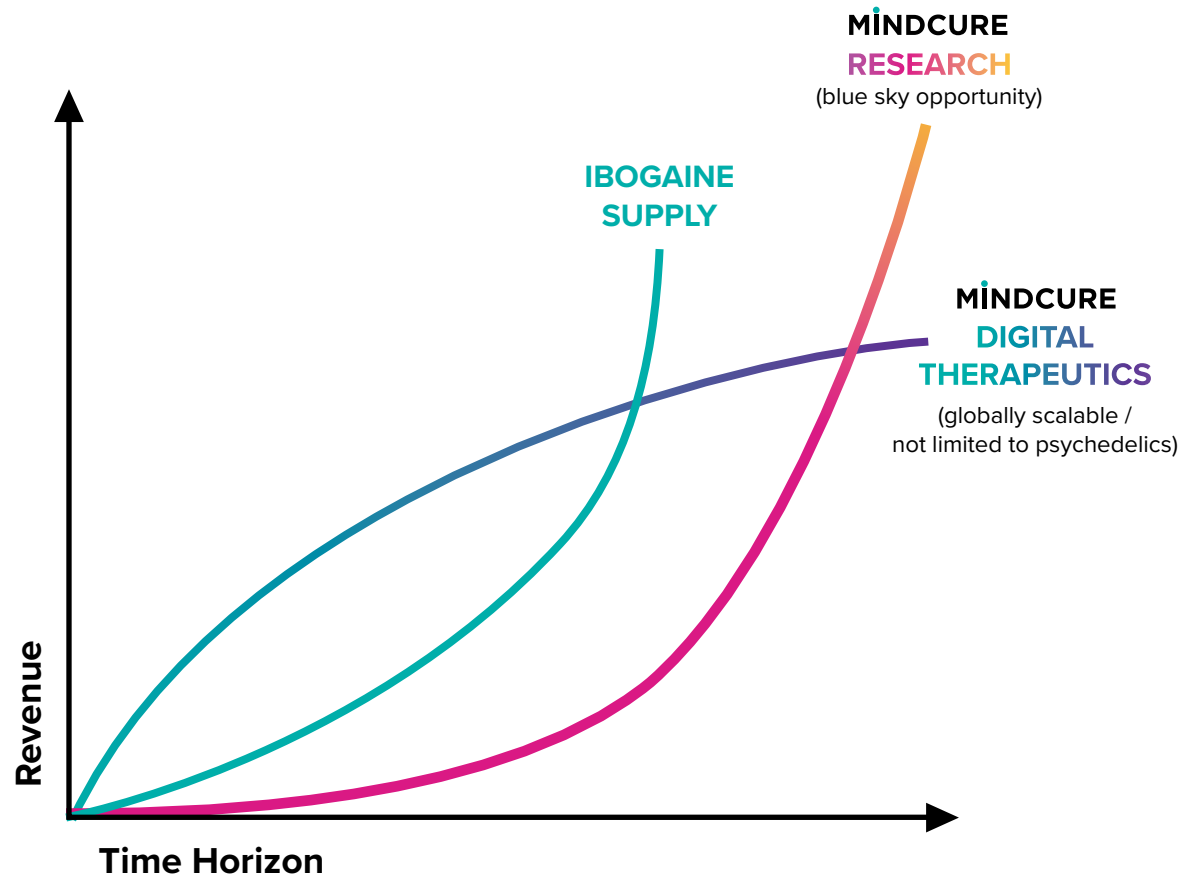
DTx

Technology as medicine

1. <https://www.ncbi.nlm.nih.gov/pmc/articles/PMC6353120/>
2. <https://www.nature.com/articles/s41591-021-01336-3>
3. <https://www.tandfonline.com/doi/full/10.1080/00952990.2017.1310218>

MINDCURE: Unique and Diversified

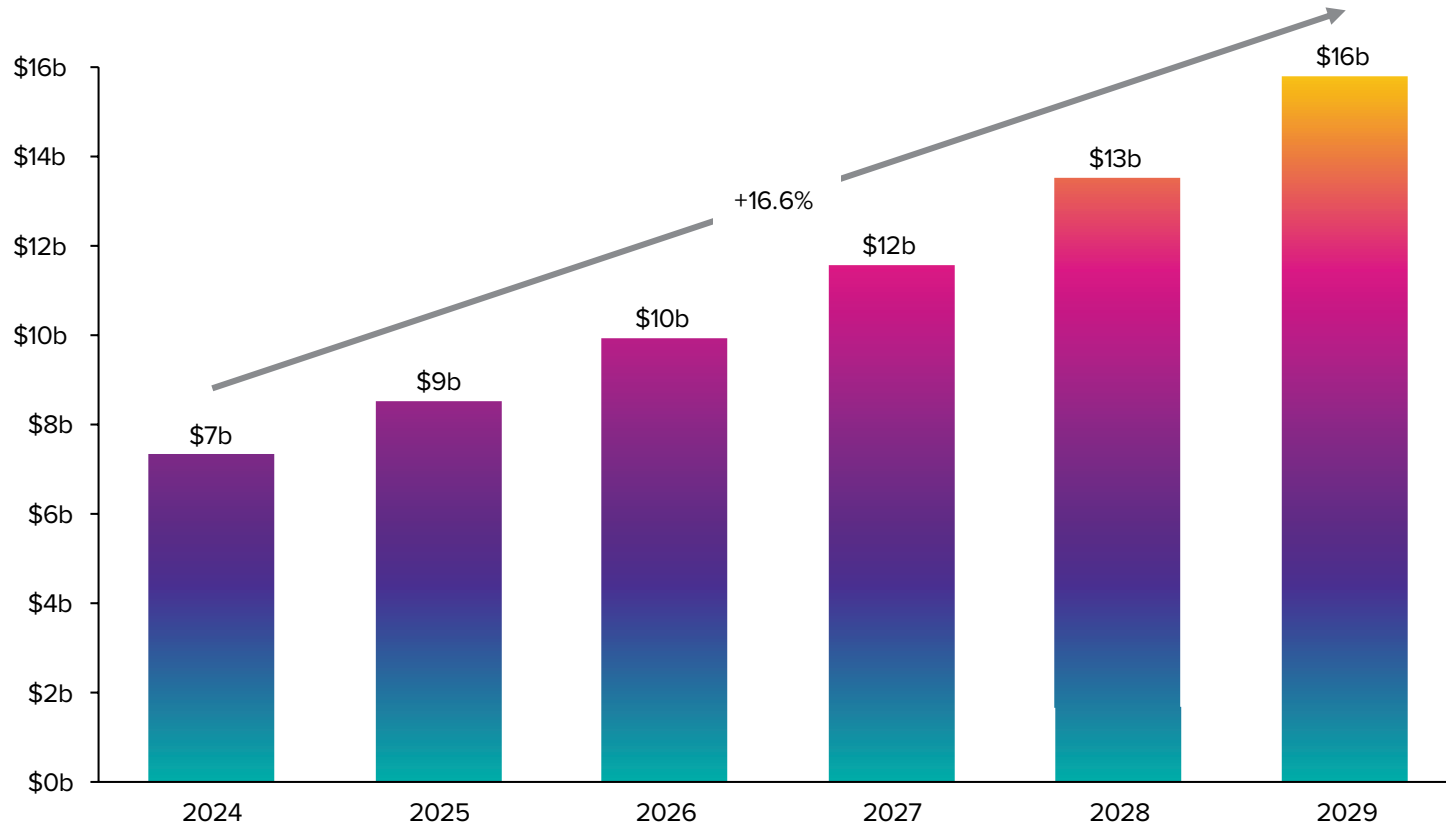
- **TECHNOLOGY:** near term revenue through SaaS model, built to scale globally as a drug-agnostic digital tool and distribution platform.
Upside Scenario: iSTRYM's target addressable population across mental health indications with a total addressable market for iSTRYM of ~12m patients in 2024.¹
- **DRUG SUPPLY & PARTNERSHIPS:** synthetic ibogaine supply for the research market in the near term. Upon successful clinical outcomes, global GMP market supply.
- **RESEARCH:** Longer-term horizon with robust drug development pipeline including development of novel molecules.



1. Source: KPMG Market Opportunity Assessment report, December 2021

iSTRYM's expansion into broader mental health indications adds an incremental \$13.5b opportunity by 2029

iSTRYM's Total Market Opportunity in MDMA-Assisted Psychotherapy for PTSD and Broader Mental Health Indications (\$b)



Source: KPMG Market Opportunity Assessment report, December 2021

MINDCURE Technology



Technology: Competitive Opportunity

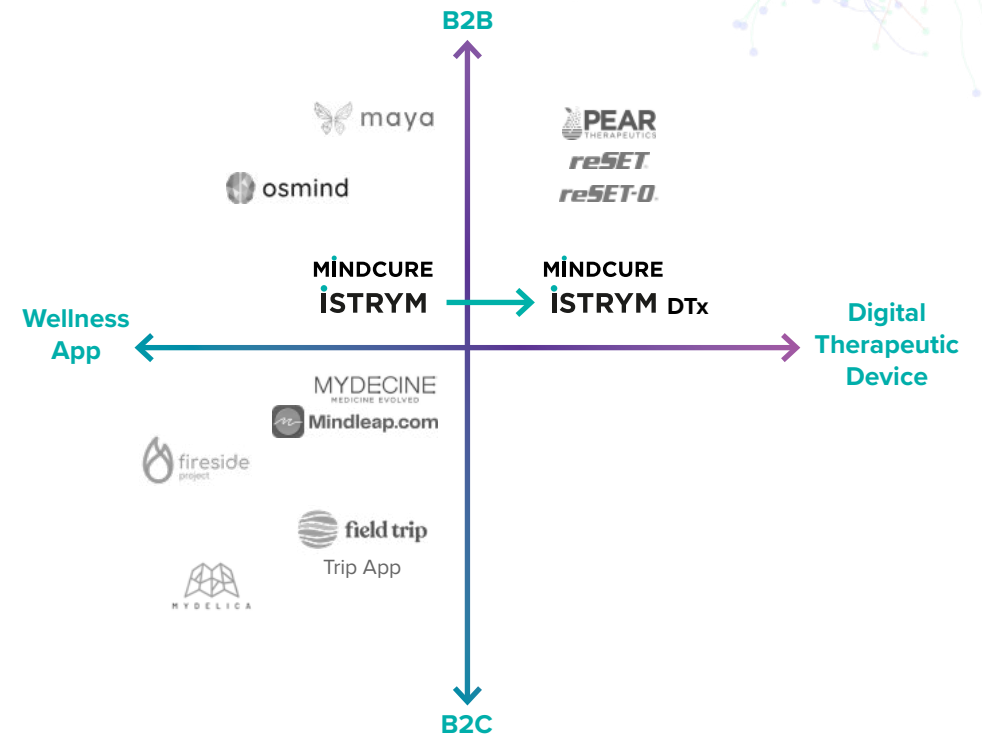
Digital therapeutics (DTx) are health interventions delivered through a smart device to induce a behavioral change in the patient.

- Global DTx is projected to reach **USD \$13.1B by 2026** from \$3.4 billion in 2021, a CAGR of 31.4%
- North America forms **the largest market for DTx**

MINDCURE's iSTRYM is a B2B Technology Platform.

Designed with patient engagement, therapist and clinician insight and scalability at its core.

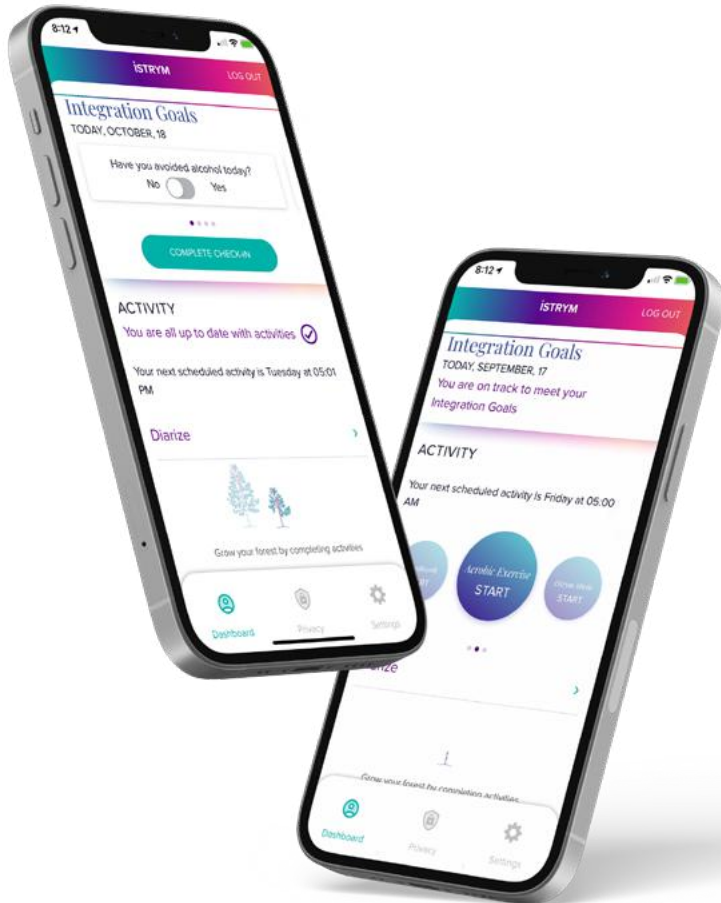
Positioned to be the drug agnostic DTx that mental health providers and insurers trust as we advance on our goal of FDA regulated SaMD approval.



1. [https://www.researchandmarkets.com/reports/5390138/digital-therapeutics-dtx-market-by-application?utm_source=GNOM&utm_medium=PressRelease&utm_code=327h8t&utm_campaign=1576682+-+Global+Di+gital+Therapeutics+\(DTx\)+Market+Research+Report+2021-2026%3a+Increasing+Incidence+of+Chronic+Diseases+%26+Technological+Advancements+are+Driving+the+Multi-Billion+Market&utm_exec=chdo54prd](https://www.researchandmarkets.com/reports/5390138/digital-therapeutics-dtx-market-by-application?utm_source=GNOM&utm_medium=PressRelease&utm_code=327h8t&utm_campaign=1576682+-+Global+Di+gital+Therapeutics+(DTx)+Market+Research+Report+2021-2026%3a+Increasing+Incidence+of+Chronic+Diseases+%26+Technological+Advancements+are+Driving+the+Multi-Billion+Market&utm_exec=chdo54prd)

Technology: Digital Therapeutics (DTx)

iSTRYM Mental Health DTx



AI-driven mental health patient lifecycle platform
from assessment to monitoring = reducing costs & improving outcomes

PRECISION MEDICINE & QUANTIFIED THERAPY

Onboarding
& Assessment
Tool Kit

Captures powerful data with Speak Ai and wearables. Takes assessment data, centralizes it, and organizes it. Orients to applicable care options.

Therapeutic
Protocol
Catalogue

Therapy and medicine protocols, generate and optimize custom treatment plans. Creating a distribution network for protocols.

In Session
Assets for
Optimization

Proprietary music tool and biometric monitoring allows real-time adjustment control based on in-session feedback.

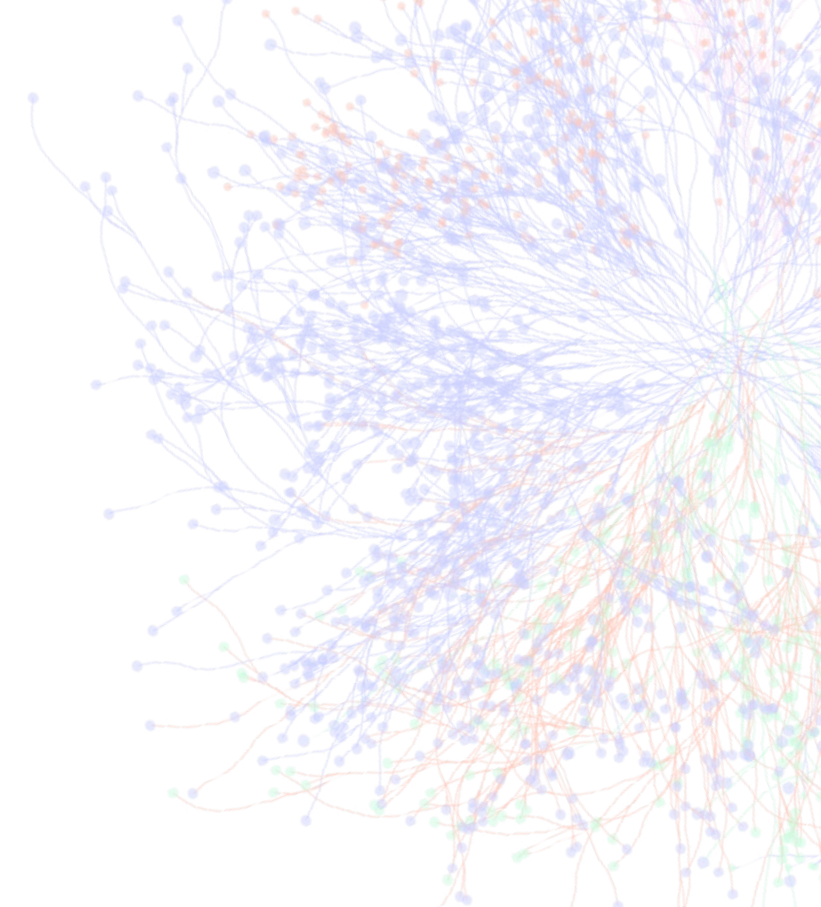
Ritual
Suite

Optimize and personalize outcomes with spiritual and science-backed daily practices. Tap into the transformative power of music, breathwork, and visualization.

AI Driven
Analysis
Engine

AI analysis and assessment constantly driving optimization and recommendations, generating new insights for patient, therapist and researchers.

Technology: Value Proposition by Segment



THERAPIST VALUE PROPOSITION:

- Reduced costs
- Better outcomes
- Increased portfolio of protocols to expand practice and payer code guidance

PATIENT VALUE PROPOSITION:

- Improved compliance
- Optimized outcomes
- Proofing safety and efficacy

DRUG & PROTOCOL DEVELOPER VALUE PROPOSITION:

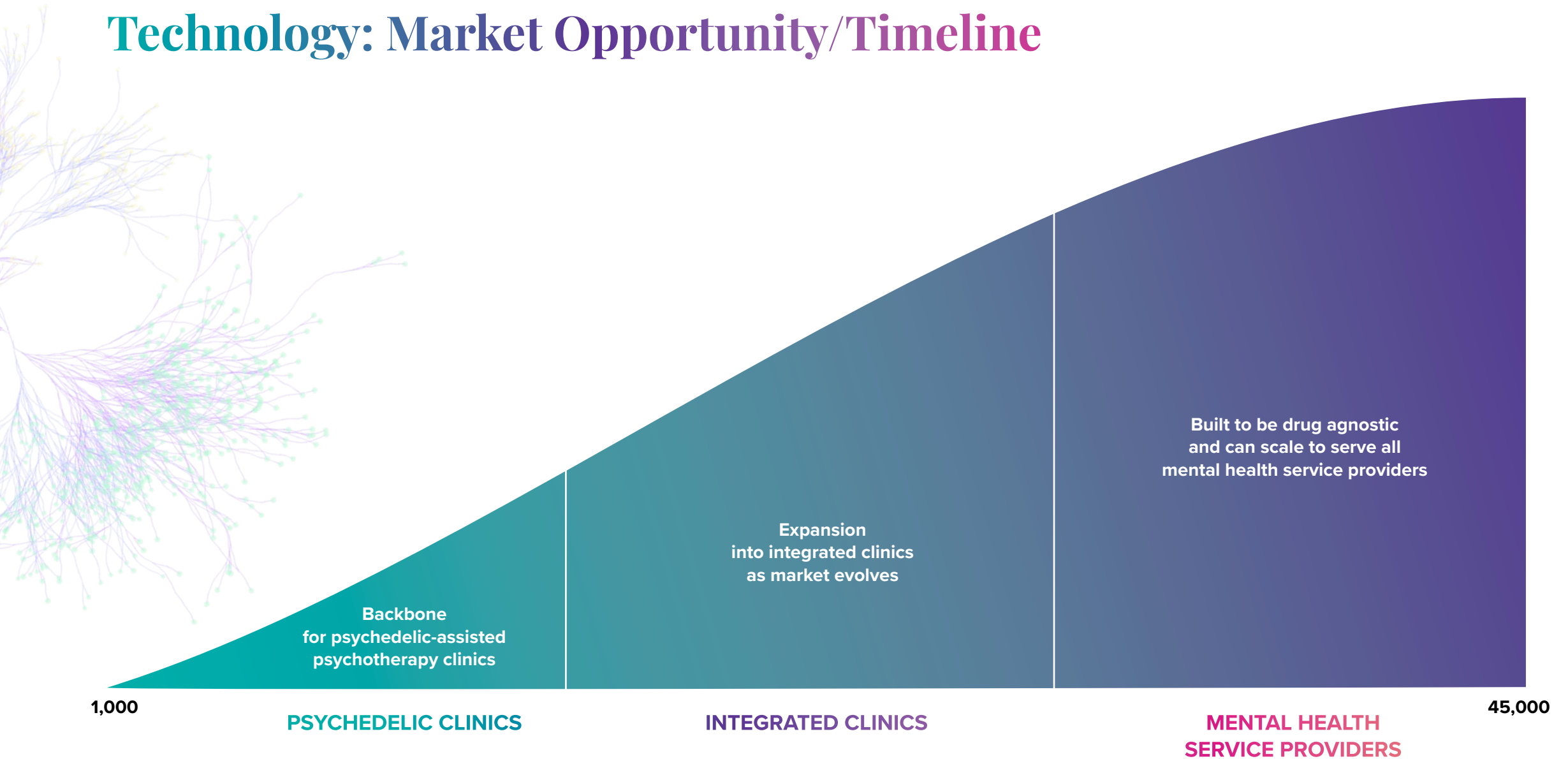
- Distribution and sales partner for protocols
- Provide line of sight to compliance, de-risking new protocol deployment

PAYER VALUE PROPOSITION:

- Access to aggregate data on patient outcomes and compliance

DIGITAL PLATFORM		DATA PLATFORM	
SALES & DISTRIBUTION	SaaS MODEL	REIMBURSEMENT SOLUTIONS	DATA LICENCING
Drug, clinical content, and protocol developers	Clinical practice management for therapists and patients	Payers and health systems	Pharma and other partnerships

Technology: Market Opportunity/Timeline



Technology: Path to Revenue

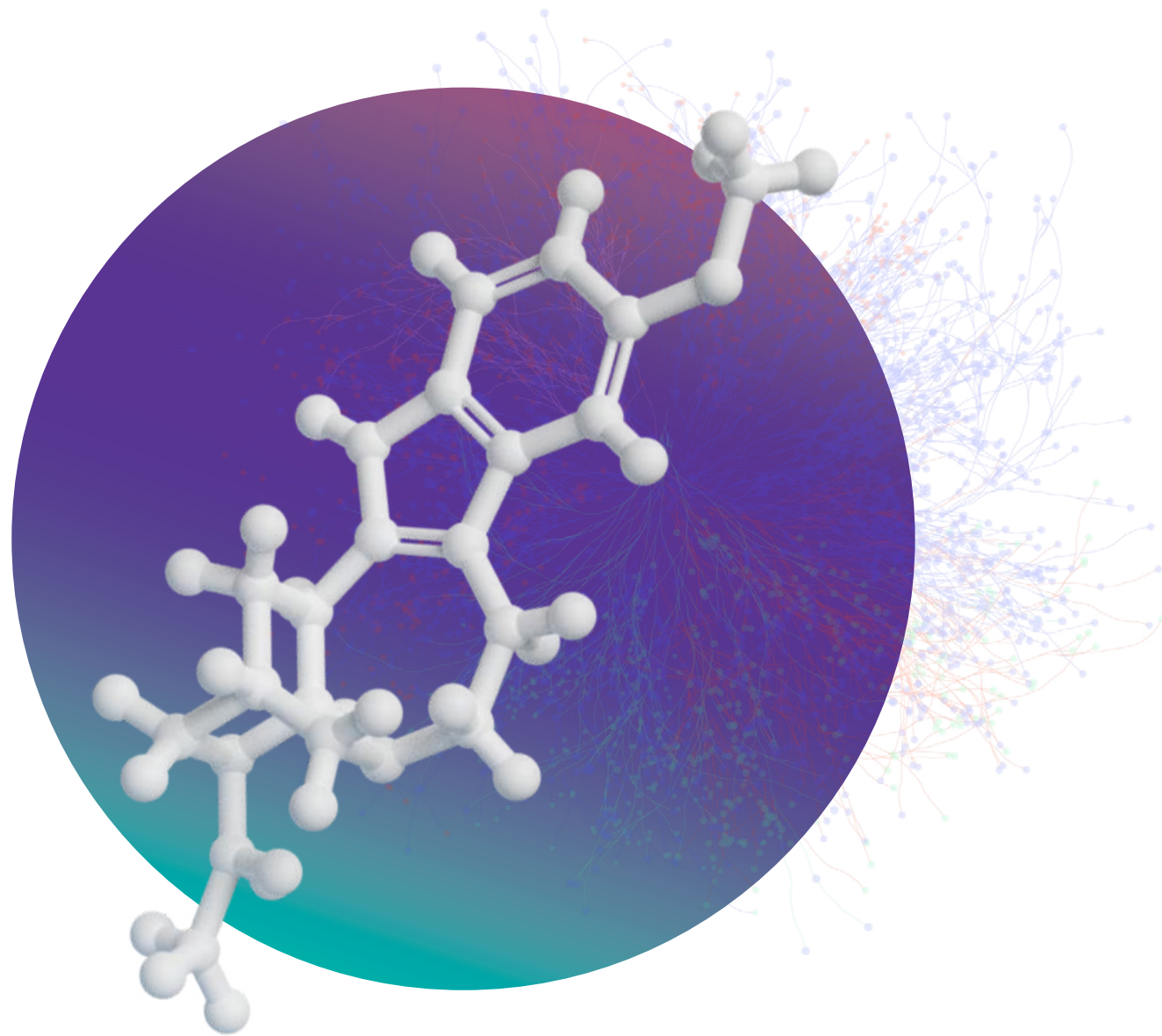
MINDCURE's goal is to be the leader in science-based, evidence-backed clinical digital therapeutics in the mental and behavioral health space.

With four lines of revenue at full commercial build out, the DTx platform provides for value creation at each segment of the value chain: **therapists, patients, payers, and drug and protocol developers.**

2021		2022		2023
Q1 - Q2	Q3 - Q4	Q1 - Q2	Q3 - Q4	Q1 - Q2
<ul style="list-style-type: none"> ✓ Pre-development market analysis and strategic assessment ✓ Development of minimum viable product (MVP) ✓ Biometric data integration ✓ Artificial Intelligence (AI) development 	<ul style="list-style-type: none"> ✓ MVP launch and market testing ✓ MVP expansion into 10 clinics in Canada and USA 	<ul style="list-style-type: none"> ● Commercial product launch of iSTRYM ● Target of 75 clinics in Canada and USA ● Pre-submission meeting regarding SaMD 	<ul style="list-style-type: none"> ● Target 150 clinics in Canada, USA and UK 	<ul style="list-style-type: none"> ● Target 250 clinics in Canada, USA and UK

MINDCURE

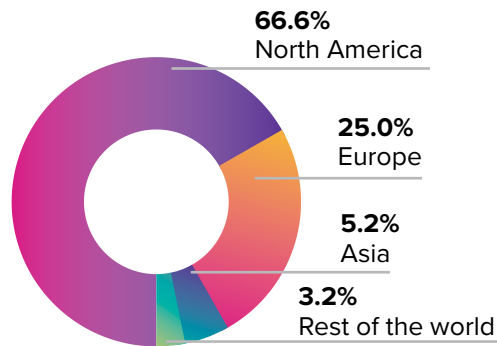
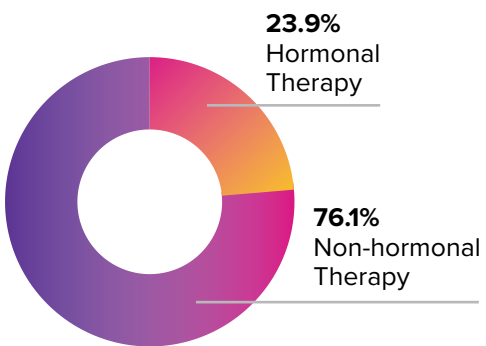
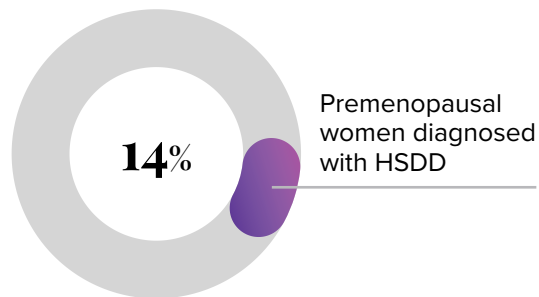
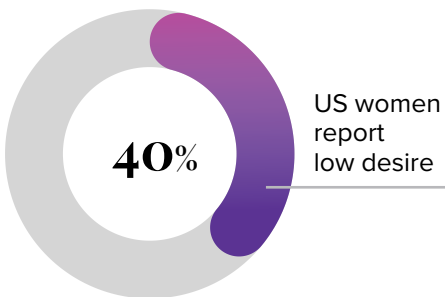
Research



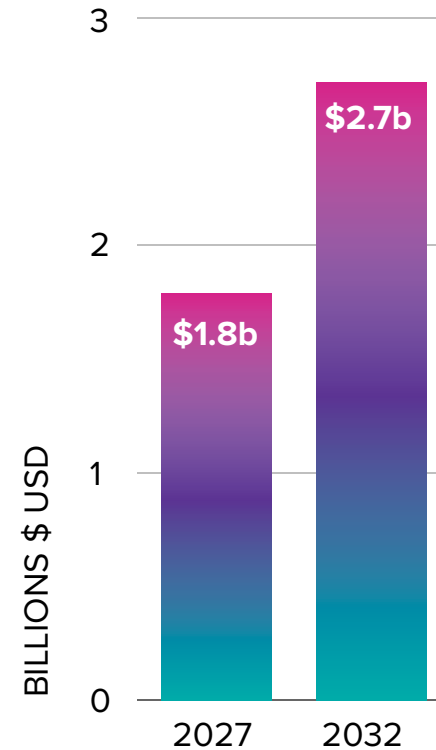
Research: The Desire Project – Opportunity

Using MDMA-Assisted Psychotherapy to Help Women Overcome Lack of Desire

Hypoactive Sexual Desire Disorder (HSDD) is a common female sexual disorder characterized by persistent low sexual desire and emotional distress not attributable to an existing medical condition or relationship issue¹.



¹ <https://pubmed.ncbi.nlm.nih.gov/27872021/>
Reference: <https://www.technavio.com/report/female-sexual-dysfunction-treatment-market-industry-analysis>



Source: KPMG Market Opportunity Assessment report, December 2021

- The market opportunity for MDMA assisted HSDD therapy and certification training is estimated to be **\$1.8 Billion in 2027** and **growing at 9% per annum to reach \$2.7Billion by 2032.**
- **Both GYNs and Psychiatrists/ Psychologists had a positive perception of the product concept** and are willing to use it as first line treatment option, with payers willing to reimburse.
- **Physicians perceive a strong need for new pharmacological agents** due to lack of efficacy and adverse effects of current treatments.

Research: The Desire Project – Solution

Exploring the potential of MDMA for Desire in Clinical Research

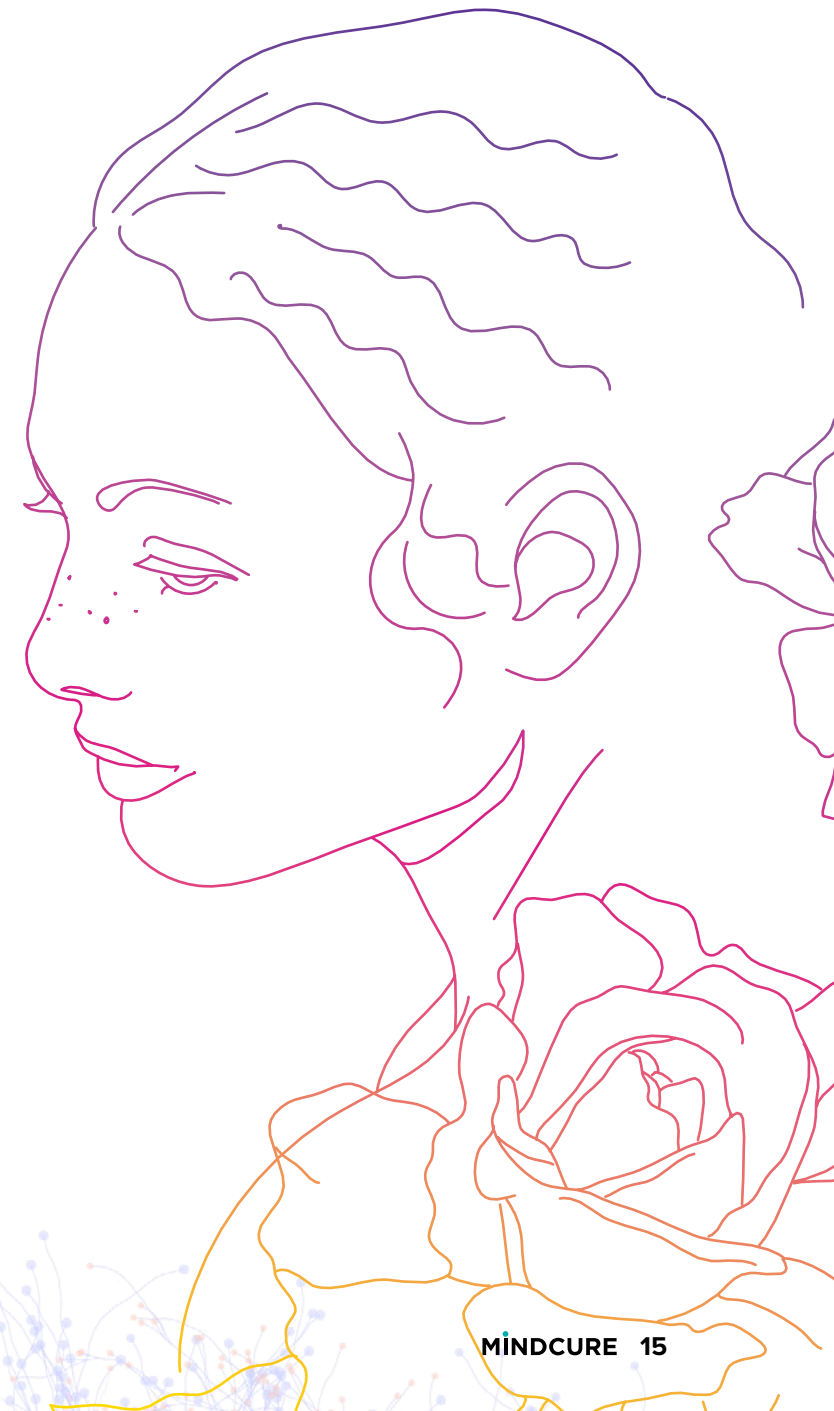
The objective of this study is to assess the potential of MDMA-assisted psychotherapy to treat Hypoactive Sexual Desire Disorder (HSDD).

THE POTENTIAL

- **Studies show that MDMA allows one to open up and work through tough challenges** that would otherwise be difficult to address¹
- **Desire is considered a product of the mind** and we believe that **MDMA can treat the root causes of HSDD**, which are often linked to history of unpleasant experiences related to intimacy or sex, negative self-image, or body image challenges
- MDMA has been reported to increase **sexual desire and satisfaction**²

INVESTING IN DESIRE

- We are developing a clinical study, which will take place in North America, **combining pharmaceutical MDMA and psychotherapy**
- MINDCURE is proudly working with **well-known experts** in the fields of **sexual health and psychedelics**
- We are using MDMA, which will be the **first to market** and is predicted to be approved in 2023, providing a clinical ecosystem in advance that we will benefit from
- **Providing training to therapists** and arming them with DTx to support highest best outcomes provides additional revenue sources



1. <https://www.maps.org/research/mdma>
2. Zemishlany Z, Aizenberg D, Weizman A, Subjective effects of MDMA ('Ecstasy') on human sexual function, Eur Psychiatry 2001 ;16:127-30.

Research: The Desire Project – Team

Led by Dr. Joel Raskin (CMO), MINDCURE’s Desire Project research team is comprised of some of the most well-cited researchers in female sexual desire, as well as the lead author of the MAPS MDMA for PTSD study.



Dr. Anita H. Clayton, MD

Professor & Chair of the Department of Psychiatry & Neurobehavioral Sciences and Professor of Clinical Obstetrics & Gynecology at the University of Virginia. Associate Member of the American College of Obstetrics & Gynecology. Founding faculty in the UVA Women’s Midlife Health Center. Principal Investigator on numerous research grants and involvement in developing sexual medicine nomenclature for ISSWSH, ICSM, and WHO/ICD-11. A research career focused on sexual medicine and women’s mental health including mood disorders associated with reproductive-life events, treatment-resistant depression, clinical trials of new treatment paradigms, sexual dysfunction related to illness and medications, and treatment of primary sexual dysfunctions in women.



Dr. Jennifer M. Mitchell, PhD

Neuroscientist focused on innovation in the treatment of addiction and other mental health issues including PTSD, anxiety, depression, and impulsivity. She is currently conducting research for MAPS in their quest to test and develop MDMA as a treatment for PTSD. A Professor in the Departments of Neurology and Psychiatry at UCSF, her research group studies the mechanisms of expression of behavioral disorders through the use of translational tools to identify new potential treatments. PhD in Neuroscience from UCSF, extensive and diverse experience with human and animal pharmacology, hypothesis-driven neuroscience, human proof-of-concept studies & clinical trials.



Dr. Cindy M. Meston, PhD

Full Professor of Clinical Psychology at the University of Texas at Austin. Directs the Female Sexual Psychophysiology Laboratory to study women’s sexual health from both a psychological and physiological perspective. Past President of ISSWSH and an active member of IASR. Named one of the 100 most influential and inspirational women in the world by the BBC, London, England in 2016. PhD in Clinical Psychology from the University of British Columbia. Postdoctoral fellowship in Sexual and Reproductive Medicine at the University of Washington, School of Medicine. Postdoctoral fellowship from the Social Science Research Council, Ford Foundation, NY.



Dr. Robert E. Pyke, PhD

Worked for four major and seven smaller pharma companies including Bristol Meyers, contributing to 6 NDAs or SNDAs on AIDS, anxiety, depression, insomnia, spasticity, analgesia, and sexual dysfunction. Directed a Phase I clinic & a drug dependence clinic. Served as clinical investigator for three antidepressants. Led the Addyi® project through Phases II and III, helped develop the currently accepted measures and diagnostic interviews, brought Lorexys® through IND and Phase 2a, and has over 100 peer-reviewed publications in the last 18 years. PhD in Internal Medicine from the University of Miami and PhD in Biochemistry from the University of Wisconsin.

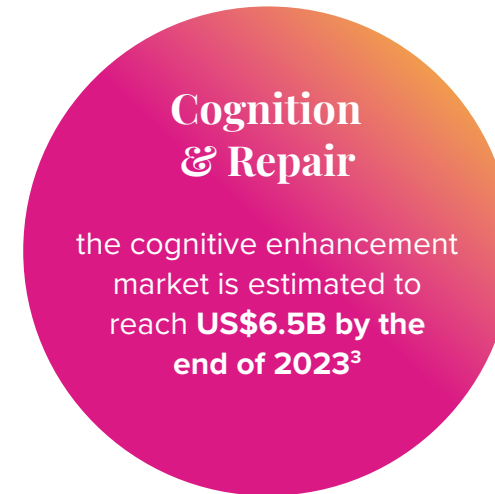


Dr. Sherry Walling, PhD

Clinical psychologist, theologian, best-selling author, yoga teacher, & mental health advocate specializing in trauma, stress, burnout, spirituality, & mind-body integrated treatment. Published researcher in academic journals including the Journal of Traumatic Stress. Graduate of the University of California, Davis and Fuller School of Psychology. PhD in clinical psychology & Master’s Degrees in both psychology & theology. Pre-doctoral research fellowship in prevention & community research at Yale University School of Medicine. Post-doctoral fellowship at the National Center for PTSD in Boston. Trained in ketamine-assisted psychotherapy with the Psychedelic Somatic Institute, currently training in the MAPS MDMA treatment protocol for PTSD.

Research: Ibogaine – A Growing Need

Potential therapeutic uses of ibogaine from preliminary data include:

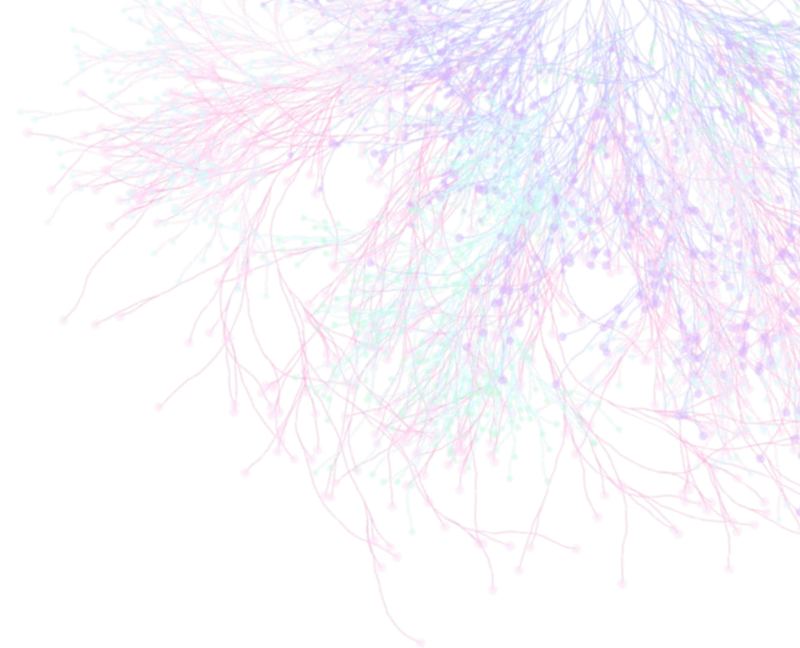


Creating Value at Each Part of the Value Chain



1. <https://blog.marketresearch.com/38-billion-u.s.-addiction-rehab-industry-pivots-to-cope-during-covid-19-pandemic>
2. <https://www.prnewswire.com/news-releases/anxiety-and-depression-treatment-market-revenue-to-reach-24-467-7-million-by-2030-says-ps-intelligence-301264737.html>
3. <https://www.alliedmarketresearch.com/cognitive-and-memory-enhancer-drugs-market>

Research: Summary



Stages of Clinical Research

	Indication	Preclinical	Phase 1	Phase 2	Phase 3
IBOGAINE – MSYNTH-001	undisclosed				
MC-106	undisclosed				
MC-808	undisclosed				
MDMA	HSDD				

Patents filed

- Provisional patent filed on non-racemic ibogaine mixtures (MC-808)
- 2 Routes to synthetic ibogaine synthesis
- 2 DTx
- 1 HSDD



Investment Summary



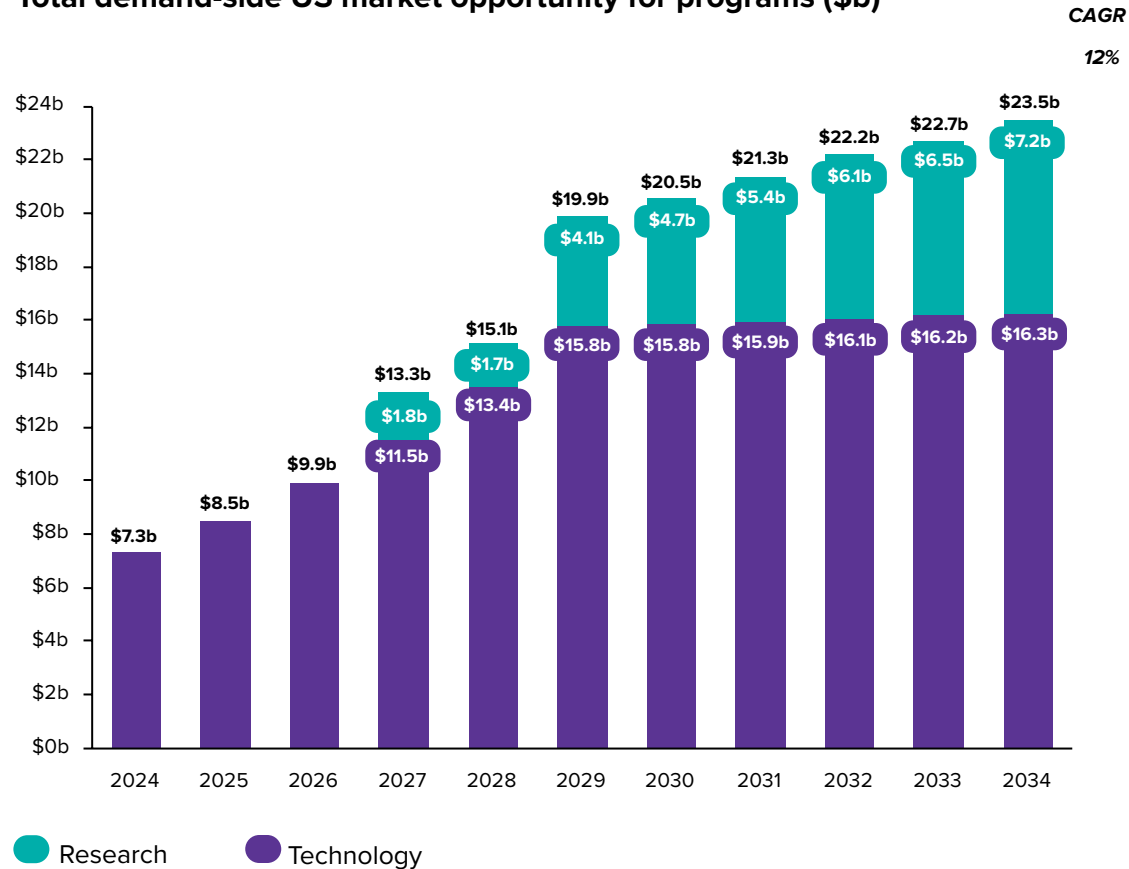
Company: Milestones

Q1 - Q2 2021	Q3 - Q4 2021	Q1 - Q2 2022	Q3 - Q4 2022
<p>TECHNOLOGY</p> <ul style="list-style-type: none"> ✓ Confirm the beta deployment partnership with ATMA for psychedelic therapy patient data collection ✓ Initiate partnership with unstructured data AI engine to integrate into iSTRYM™ ✓ iSTRYM: integrating biometric data and developing AI to drive integration protocol optimization ✓ Patent filing on proprietary digital therapeutics platform <p>RESEARCH</p> <ul style="list-style-type: none"> ✓ Primary investigator secured for our first psychedelic research program ✓ Research relationship secured for our second psychedelic program 	<p>TECHNOLOGY</p> <ul style="list-style-type: none"> ✓ iSTRYM™ fully functional beta deployment into multiple psychedelic treatment facilities ✓ Update on psychedelic research clinic partnerships with iSTRYM™ <p>RESEARCH</p> <ul style="list-style-type: none"> ✓ Patent applications for company's first fully synthetic routes to create ibogaine ✓ Non-GMP scale up on the iboga molecule ✓ Initiate major research program - Desire Project ✓ Patent filing HSDD 	<p>TECHNOLOGY</p> <ul style="list-style-type: none"> ● iSTRYM SaaS commercial launch with target 75 clinics in Q2 ● FDA iSTRYM SaMD pre-submission meeting scheduled in Q2 ● Initiate iSTRYM machine learning AI validation study in Q2 <p>RESEARCH</p> <ul style="list-style-type: none"> ✓ Provisional patent filed on non-racemic ibogaine mixtures (MC-808) ● Update on new molecular entity and clinical development program for MC-106 in Q1: The Desire Project ● Initiation of pre-clinical studies for ibogaine in Q1 <p>Availability of synthetic GLP grade ibogaine in Q2-Q3</p>	<p>TECHNOLOGY</p> <ul style="list-style-type: none"> ● iSTRYM in 150 clinics in Q4, in USA and Canada ● FDA study approval in Q4 ● iSTRYM machine learning AI validation study completion in Q4 ● iSTRYM launch of distribution of alcohol use-disorder protocol (KARE) licensed from Awakn Life Sciences Q3 <p>RESEARCH</p> <ul style="list-style-type: none"> ● Update on new molecular entity and pre-clinical/clinical development program for MC-808 in Q3

✓ Accomplished per plan

MINDCURE Programs and Products Address a Potential TAM of ~\$24b by 2034

Total demand-side US market opportunity for programs (\$b)



RESEARCH

- Indication One, estimated to grow from \$1.8b in 2027 to \$2.6b in 2034 at a rate of 6% p.a.
- Indication Two, estimated to grow from \$2.2b in 2029 to \$4.6b in 2034 at a rate of 15% p.a.

TECHNOLOGY

- The total opportunity for iSTRYM in major psychotherapy treatments is \$7.3b in 2024 growing at ~8% p.a. to reach \$16.3b by 2034

Source: KPMG Market Opportunity Assessment report, December 2021

Partnerships



→ Breathwork program partner for iSTRYM technology



→ Machine learning (AI) music partner for iSTRYM technology



→ Natural language processing partner for iSTRYM technology

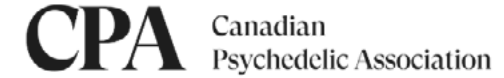


→ iSTRYM distribution partner - data licensing: patient, psilocybin



→ iSTRYM protocol distribution partner

Memberships



Share Information & Capital Structure

TRADING SYMBOL: US	OTCQX: MCURF
TRADING SYMBOL: CA	CSE: MCUR
TRADING SYMBOL: FRANKFURT	FRA: 6MH
MARKET CAPITALIZATION (as of Jan 28, 2022)	\$16.9M
SHARES OUTSTANDING	93.9M
OPTIONS OUTSTANDING	10.6M
WARRANTS OUTSTANDING	27.9M
FULLY DILUTED	134.1M
AVERAGE DAILY VOLUME TRADED (over 50 days)	0.1M
MANAGEMENT / ADVISORS / INSIDER OWNERSHIP	9.8%
CASH POSITION (as of FQ2/22, ended Nov. 30, 2021)	\$13.4M

Analyst Coverage

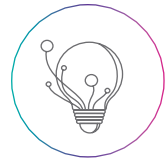


Jason McCarthy, PH.D

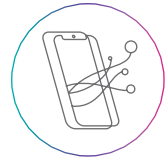
Index Inclusion



Investment Highlights



**INTELLECTUAL PROPERTY (IP)
PROTECTION**



**POISED TO GENERATE
NEAR-TERM REVENUE**



**ADVANCING INNOVATIVE
DRUG DEVELOPMENT**



**LAUNCHED
“THE DESIRE PROJECT”**



**STRONG FINANCIAL
POSITION**



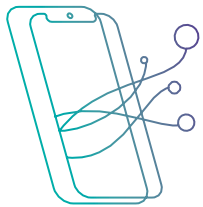
**SIGNIFICANT
MARKET OPPORTUNITY**



**PURPOSE-BUILT STRATEGIC
PARTNERSHIPS**

Why Invest Now

Committed leadership and world-class team
Strong financial position and disciplined execution



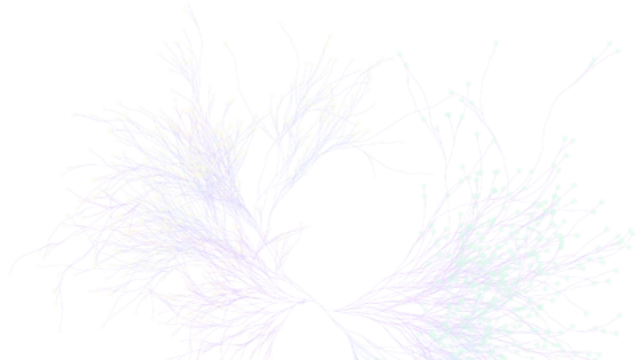
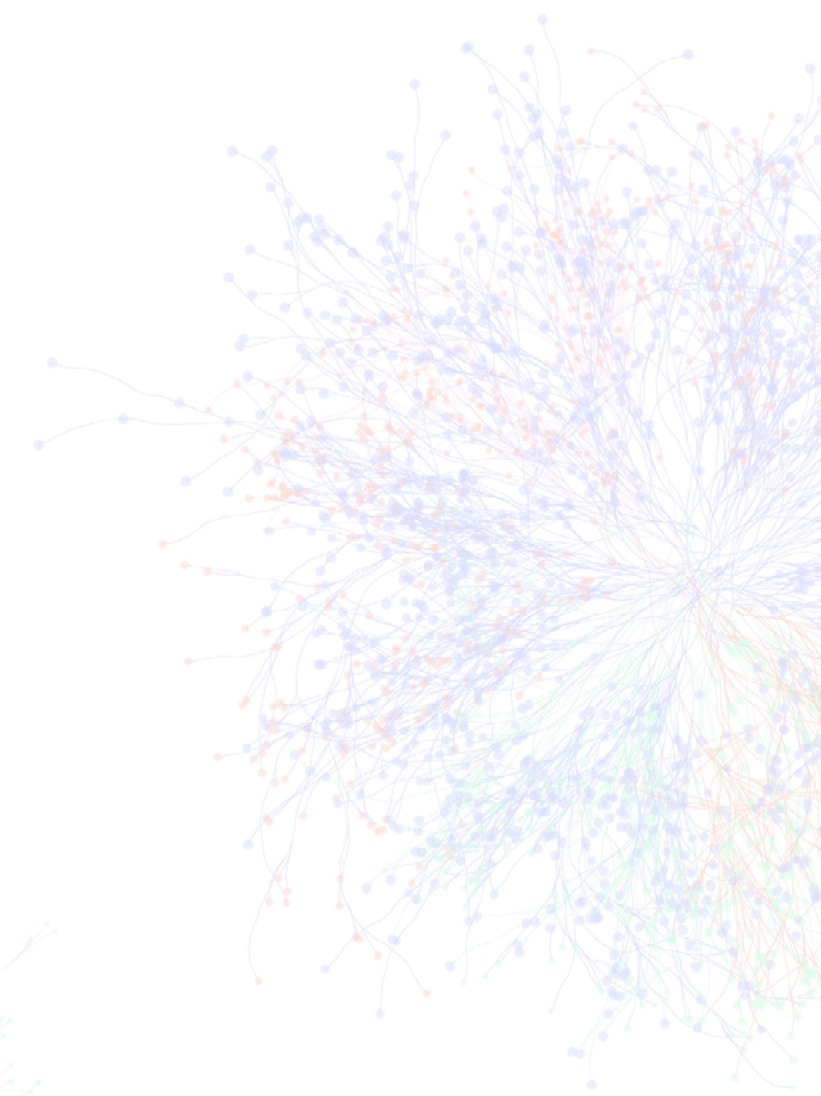
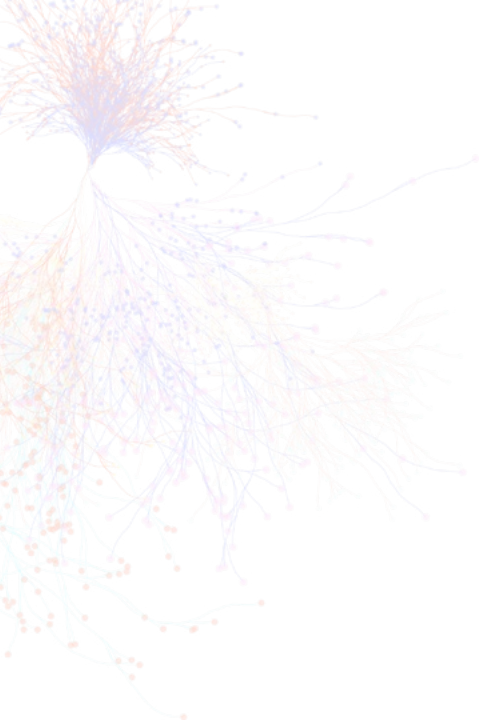
MINDCURE **Technology**

- **Near-term revenue – iSTRYM Q1-Q2 2022**
- **SaaS scalability with IP Protection**



MINDCURE **Research**

- **Near-term revenue – synthetic ibogaine GLP supply Q2-Q3 2022**
- **Diversified drug development pipeline**



Appendix



Advisors

MINDCURE is supported by world-renown experts in neuroscience, mental health, pharmacology, and psychedelics.

Technology



Dr. John Brownstein, PhD – Scientific Advisor

Chief Innovation Officer of Boston Children’s Hospital and Professor of Biomedical Informatics at Harvard Medical School. Directs the Computational Epidemiology Lab and the Innovation and Digital Health Accelerator both at Boston Children’s. Trained as an epidemiologist at Yale University. His efforts are in use by millions each year including the CDC, WHO, DHS, DOD, HHS, and EU. Serves advisory role to numerous agencies on real-time public health surveillance including HHS, DHS, CDC, IOM, WHO and the White House.



Dr. Ken Weingardt, PhD – Technology Advisor

A clinical psychologist with 20 years of experience working at the intersection of technology and behavioral health. As an Associate Professor at Northwestern Feinberg School of Medicine he served as the Scientific Director, Center for Behavioral Intervention Technologies (CBITS), where he worked with researchers and clinicians to develop and evaluate digital therapeutics for behaviour health.



Dr. Ty Tashiro, PhD – Technology Leadership

Dr. Tashiro received his PhD in psychology from the University of Minnesota and has been an award-winning professor at the University of Maryland and University of Colorado. He is also a social scientist, relationship expert, and published author of books including, THE SCIENCE OF HAPPILY EVER AFTER and AWKWARD: The Science of Why We’re Socially Awkward and Why That’s Awesome. In his professional career, Dr. Tashiro also served as the Chief Science Officer at Connectidy, a platform that leveraged IBM’s Watson AI platform to improve decision-making at scale.

Research



Hamilton Morris – Scientific Advisor

A chemist, filmmaker, and science journalist. The director of the award-winning documentary series Hamilton’s Pharmacopeia. Attended the University of Chicago and The New School in New York City. Frequently consults with media on the subject of psychoactive drugs and conducts pharmacological research at the University of the Sciences in Philadelphia.



Dr. Jason Wallach, PhD – Scientific Advisor

Instructor in the Department of Pharmaceutical Sciences as well as the Substance Use Disorders Institute at the University of the Sciences, Philadelphia, Holds an adjunct appointment at Cooper Medical School of Rowan University, Camden, NJ. Author of over 20 publications in peer-reviewed journal articles. PhD in Pharmacology and Toxicology from University of the Sciences. BS in Cell and Molecular Biology from Indiana University of Pennsylvania.



Dr. Joel Raskin, MD – Scientific Advisor

Psychiatrist and academic with 20 years of international pharmaceutical experience in neuroscience drug development, lifecycle preparation, launch, and commercialization with Eli Lilly & Co. Worked with medications for mood and anxiety disorders, schizophrenia, dementia, migraine and pain. As Senior Director, led medical affairs team for Alzheimer’s Disease diagnostics and therapeutics. Medical degree and FRCPC Psychiatry from the University of Toronto.

Board Members



Philip Tapley – Chairman of the Board of Directors

25 years of experience driving transformational change in highly regulated industries. Most recently Chief Information Officer at Westland Insurance. Founded iProcess Solutions, a pioneer in the insurance technology space. MBA from Simon Fraser University.



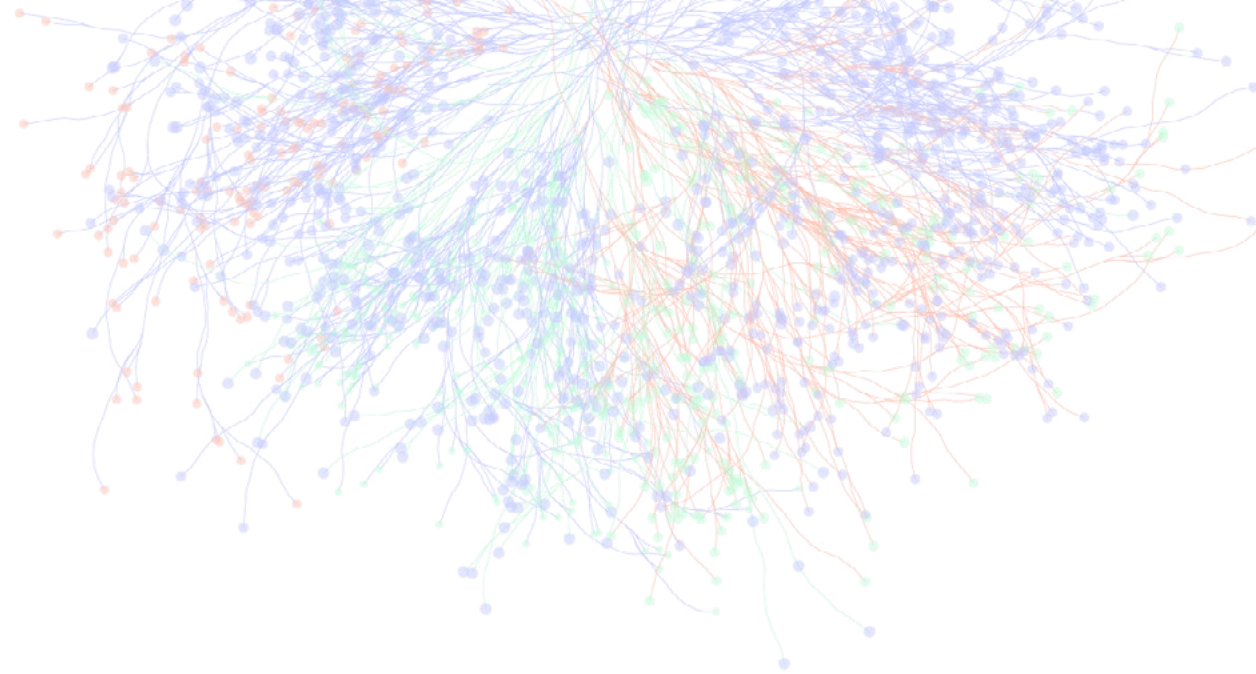
Larissa Chaikowsky – Director

Chief Operating Officer for the U.S. Wealth Management business at BMO. Previously the U.S. Chief Human Resources Officer for BMO Financial Group. At BMO, has held several senior positions, helping redefine the BMO brand and improving the business practices of Technology and Operations, Human Resources and Corporate Strategy. Bachelor's of International Business and Relations from the Sprott School of Business at Carleton University. MBA from the Richard Ivey School of Business.



Kelsey Ramsden – President & CEO

15 years of experience founding, scaling, and operating innovative companies across Canada and the Caribbean. Built multiple 8-figure businesses and twice been named Canada's Top Female Entrepreneur. On the Entrepreneurship Council for the University of Western Ontario, where she is also a faculty member. MBA from the Richard Ivey School of Business at the University of Western Ontario.



Robert C. Hill – Director

Managed private and publicly traded cannabis, technology, and financial services companies in Canada, the USA, and Japan. CPA designation in British Columbia, Canada. Began career with KPMG, served as VP at Haywood Securities, and most recently a CFO in the Technology and Media and Life Sciences industries.



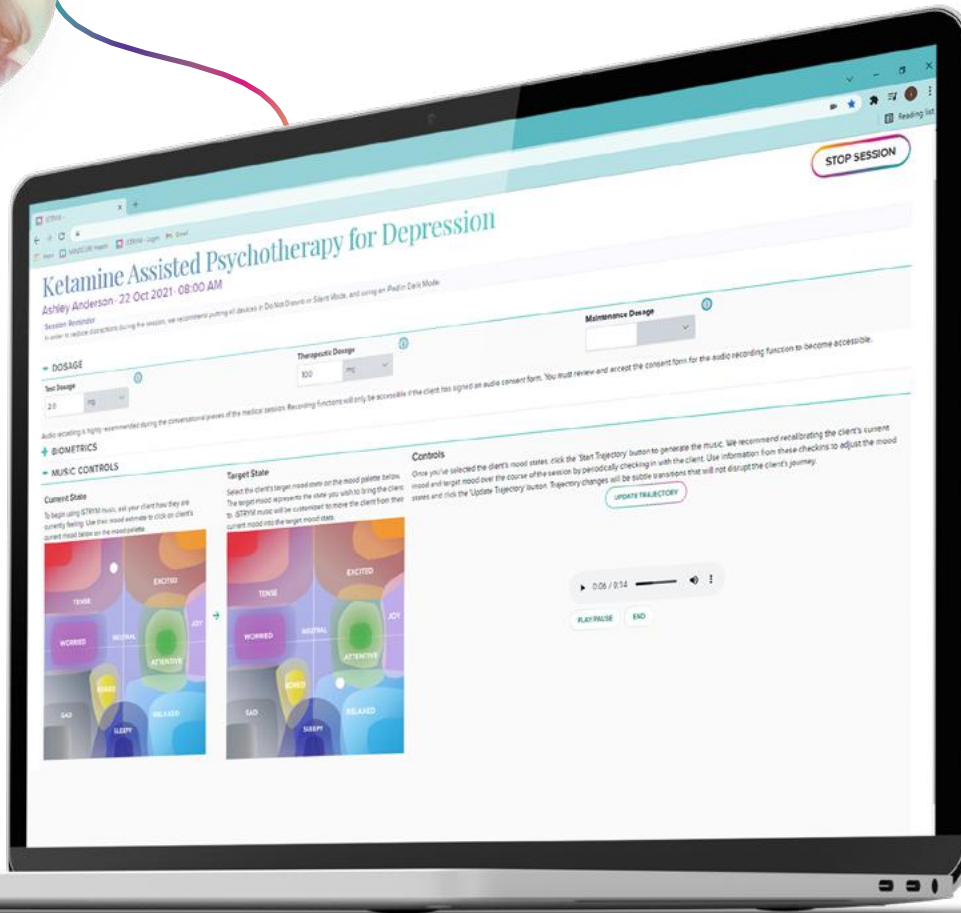
Jason Pamer – Director

20 years of experience managing operations and product development in the technology and consumer products industries. Led start-up companies through concept to launch and has also managed strategy and development at large enterprise software companies. Led e-commerce operations across digital media, health and medical cannabis. MBA from Simon Fraser University.

Technology: iSTRYM for the Therapist



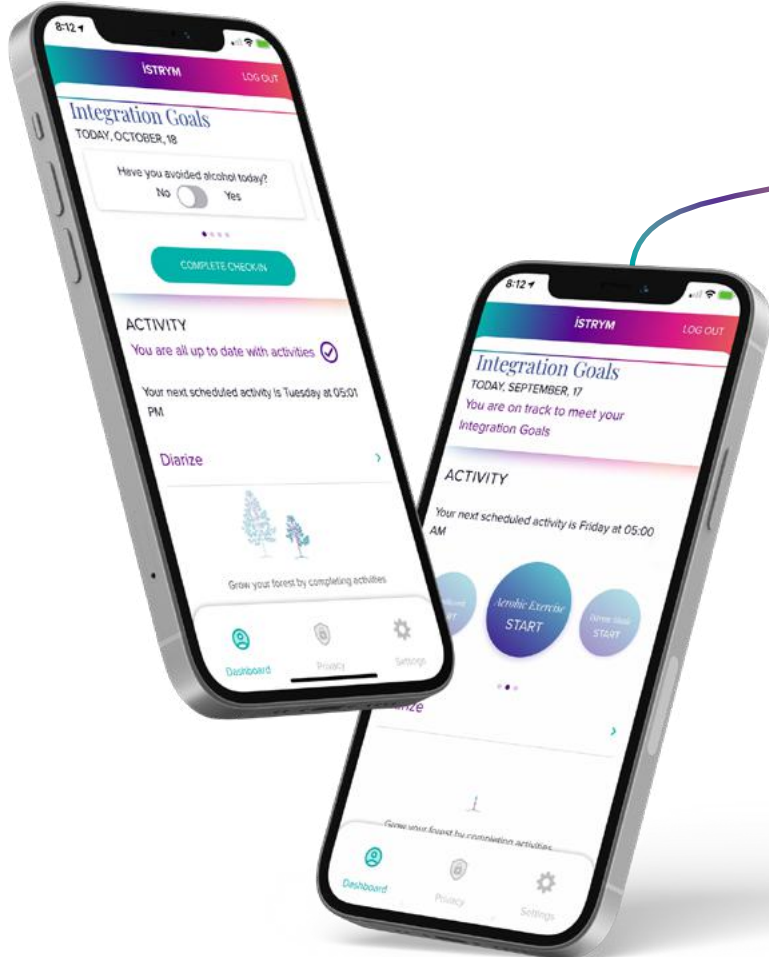
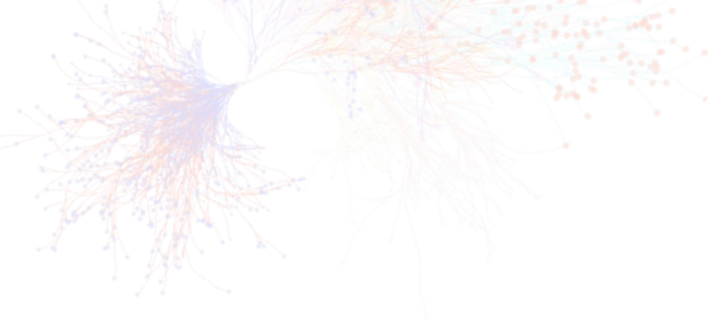
Katherine – Practitioner



- **Modernizes care from manual to digital**, yielding better outcomes and cost savings for therapists and insurers
- **Provides a distribution network of science-based protocols** from psychedelic companies directly to therapists
- **Expands therapists' toolkit for gold standard care** with assessments, propriety AI-driven music and more
- **Monitors biometrics and psychometrics**, providing reliable data for timely interventions and care optimization
- **Supports post-session integration and connectivity** through a suite of science-backed tools
- **Delivers optimized protocols and proof of efficacy** at scale, creating a competitive advantage for therapists

SUPPORTS PAYER ACCESS, REDUCED COSTS, BETTER CARE & BETTER OUTCOMES.

Technology: iSTRYM for the Patient



Josh - Patient

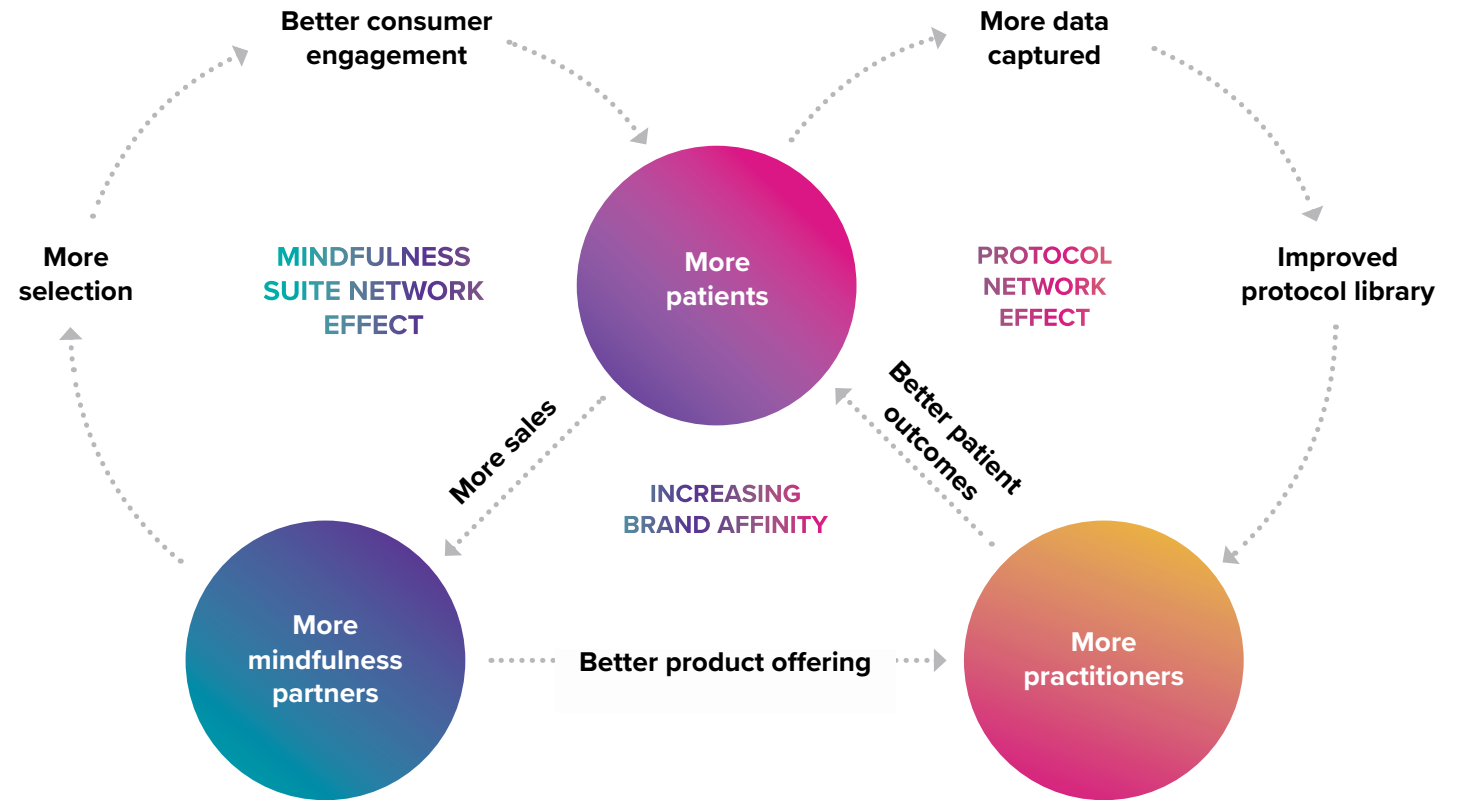
“The old pen and paper therapist can’t give me what I need to understand and take control of my mental health. I want to know what I need to do, when I need to do it, and how it’s helping at each step. I want my journey to be personalized and modernized.”

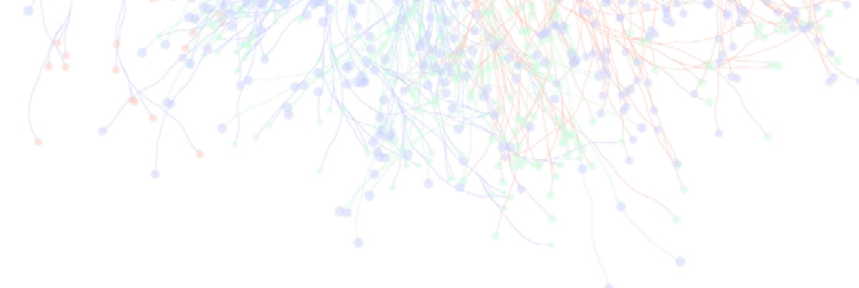
- **Provides data-backed assurances for patients** who are cautious about using psychedelic therapies
- **Modernizes care from manual to digital**, catering to the trend towards digital interfaces
- **Connects patients with therapists** and emergency services 24 hours a day, 7 days a week
- **Personalizes care and provides optimization** for each patient’s unique goals and mental health journey
- **Expands toolkit of specific and actionable insights**, elevating patient to colleague in care
- **Promotes daily rituals post-care**, promoting a continuation of the client’s journey to optimized mental wealth

IMPROVING COMPLIANCE, OPTIMIZING OUTCOMES & PROOFING SAFETY AND EFFICACY.

Technology: Scale Model

- We've set our sights on being the **distribution network for care protocols** (psychedelic and integrative), the trusted tool of therapists, and the trusted provider of the quantified mind for individuals.
- Our platform is designed to benefit from a **double network effect**, grow exponentially, and create a barrier to entry.

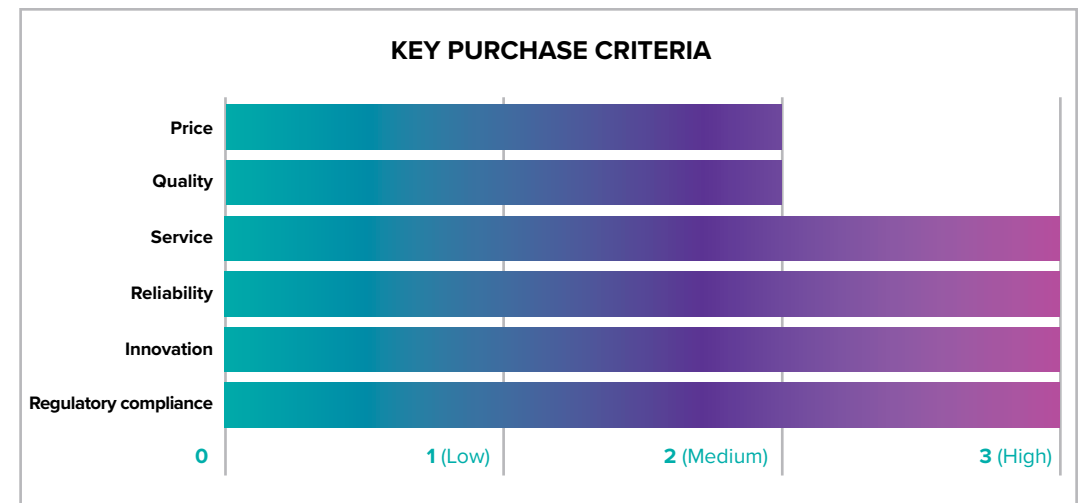
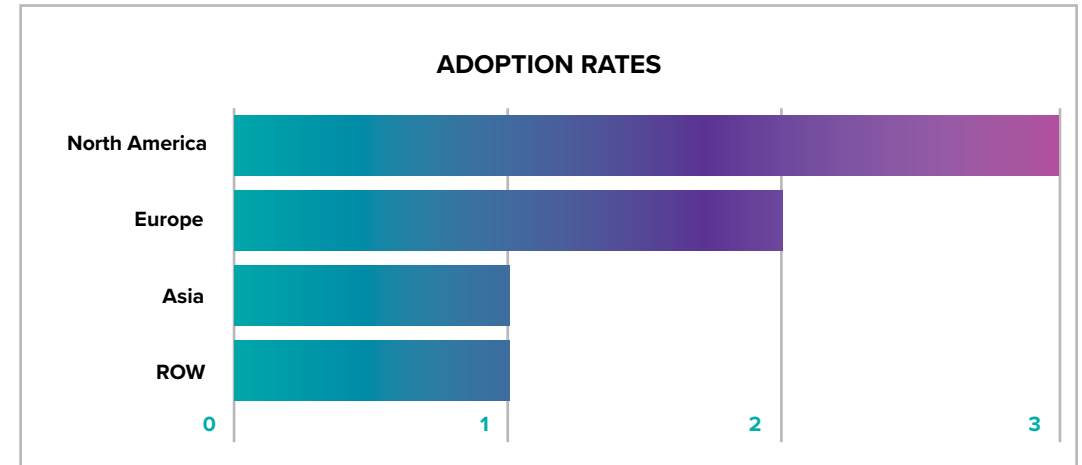
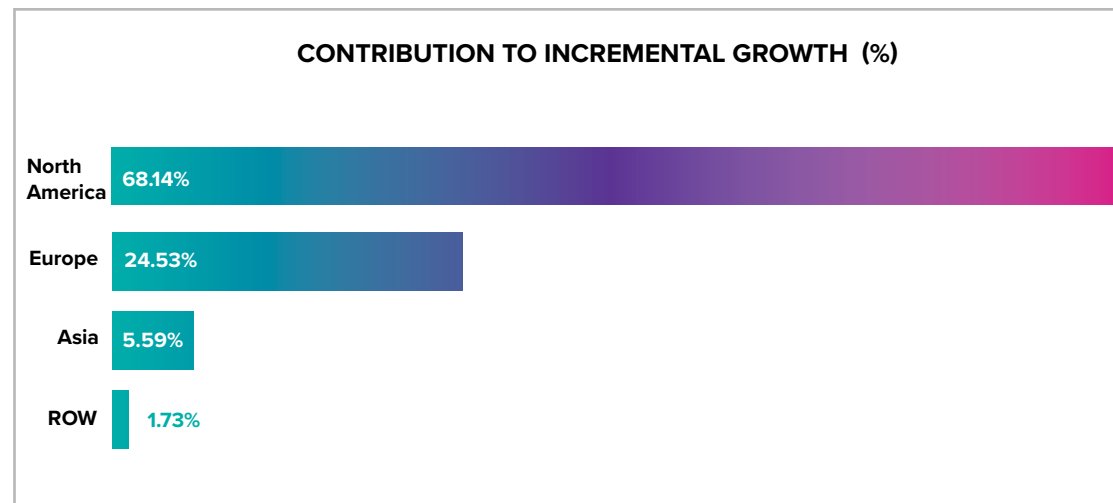




Research: The Desire Project – Landscape

Current Competitive & Customer Landscape

- The two FDA-approved drugs designed to treat loss of sexual desire in females only treat the symptoms, rather than the underlying causes
- We have an opportunity to find a more effective and better tolerated treatment for women affected by this disorder
- Demographics with younger generations more willing to discuss mental and sexual health
- Improved diagnostics and increasing demand for diagnosis and treatment



MDMA-assisted psychotherapy for HSDD: Phase 2 Trial Design

Timeline

- In discussions to initiate Phase 2 study
- 100 premenopausal women with acquired generalized HSDD
- 1 year enrollment - US and Canada

Objectives

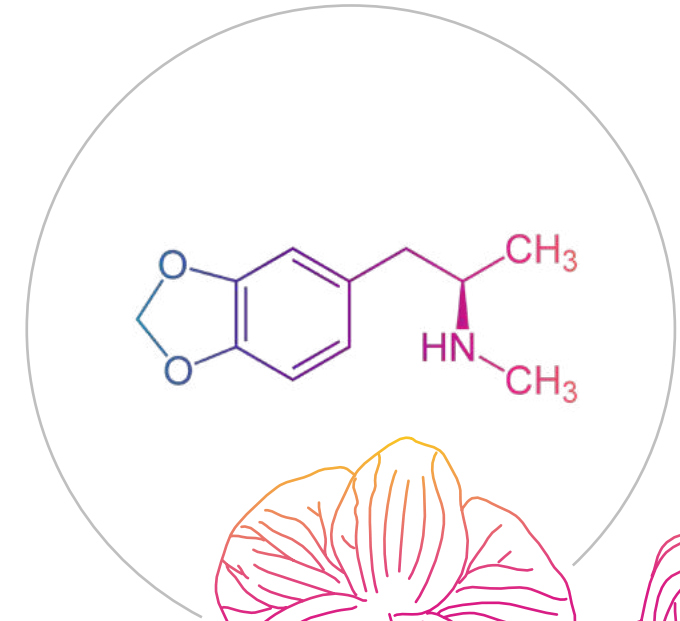
- Test whether MDMA produces a clinically meaningful therapeutic response in women with moderate to severe HSDD
- Document the safety profile of MDMA in such use

Design

- DB 1:1 randomized placebo-controlled
- 3 preparatory psychotherapy sessions
- 3 monthly doses MDMA/placebo
- 3 integrative sessions in between
- After final dosing, 3 monthly follow-ups for longer-term assessment of efficacy and safety

Co-Primary Endpoints

- Change from baseline in the Sexual Desire domain of the Female Sexual Function Index (FSFI), and Female Sexual Distress Scale (FSDS)-DAO item 13





MINDCURE

info@mindcure.com

investors@mindcure.com

www.mindcure.com

+1.888.593.8995

Daniel Kim - VP Investor Relations

dkim@mindcure.com

